

TIMER

DHC7A

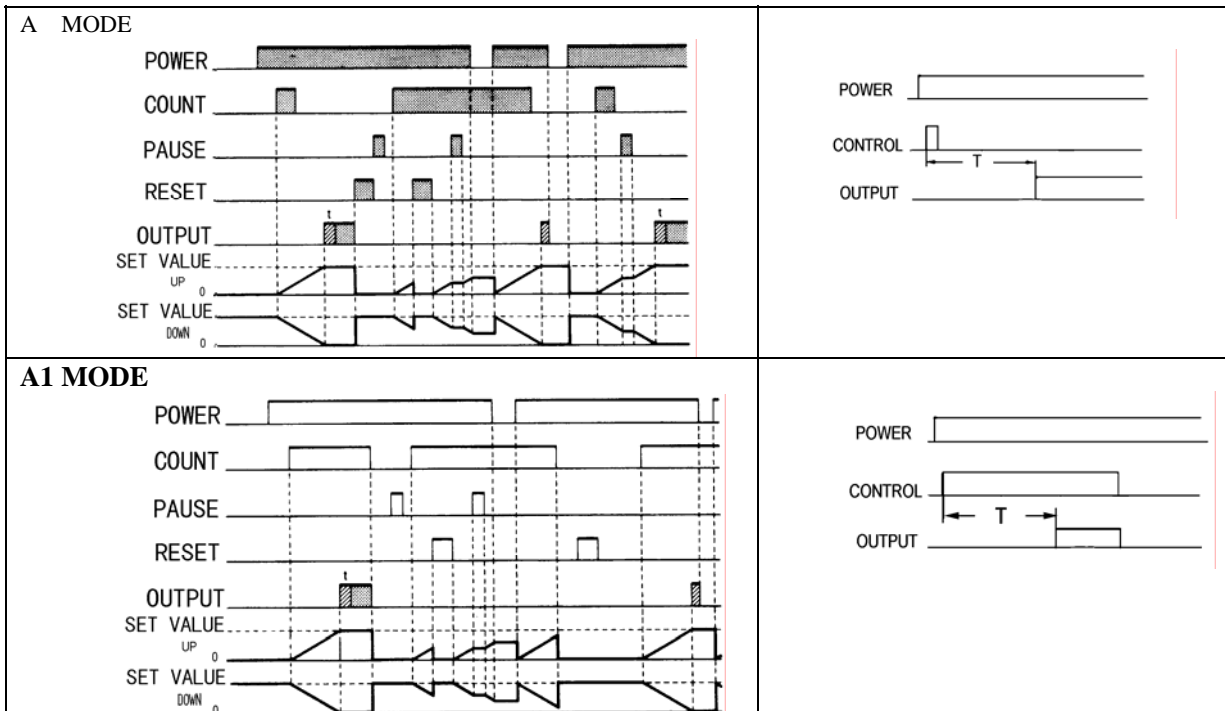
SOLID-STATE TIMER

- DIN-size 72×72mm
- Designed with an emphasis on ease of operation.
- 9 operation mode selectable with one unit.
- Any desired time can be set digitally within a range from 0.001 seconds to 9999 hours
- On-line change of set value possible
- LCD display with built-in backlight
- Power supply is freely selectable within a range of 100~240VAC

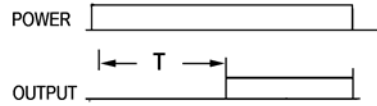
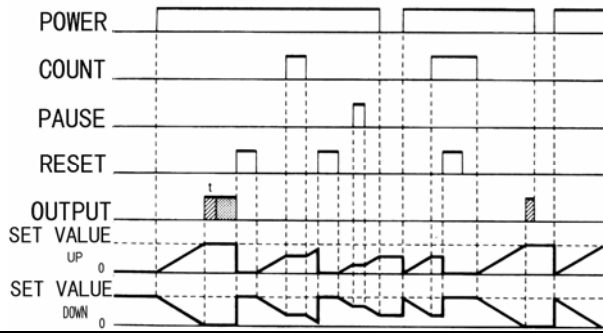
SPECIFICATIONS

- | | |
|---|---|
| ● Operation mode: A A1 A2 A3 B B1 D E F | ● Supply voltage: AC85~264V |
| ● Timer range: | ● Error: $\leq 0.01\% + 0.03S$ |
| 0. 001S~ 9.999S | ● Control output : 3A AC250V (resistive load) |
| 1. 0.01S ~ 99.99S | ● Electrically life: $\geq 10^5$ |
| 0.1S ~ 999.9S | ● Mechanically life: $\geq 10^7$ |
| 1S ~ 9999S | ● Operation temperature: -10°C ~ 55°C |
| 1S ~ 99M59S | ● Panel cutout: 68×68mm |
| 0.1M ~ 999.9M | ● Power consumption: $\leq 7VA$ |
| 1M ~ 9999M | ● Min input signal width: 20 mS |
| 1M ~ 99H59M | ● Reset by power off: 0.5S |
| 0.1H ~ 999.9H | ● Weight: 0.6kg |
| 1H~ 9999H | ● Humidity: 35%~85% RH |

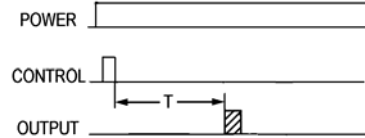
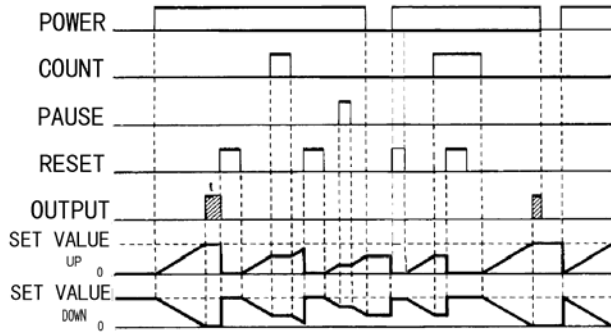
OPERATION MODES



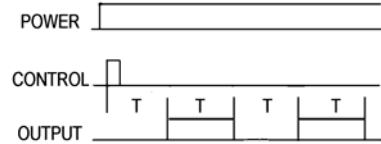
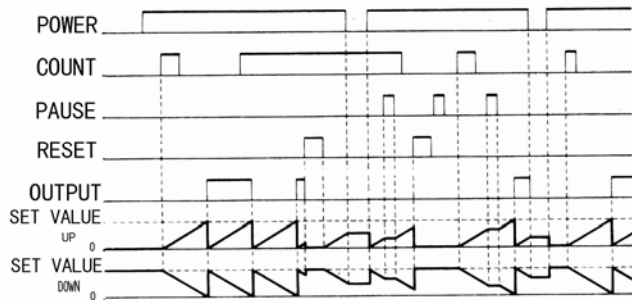
A2 MODE: (HOLD)



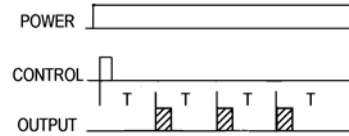
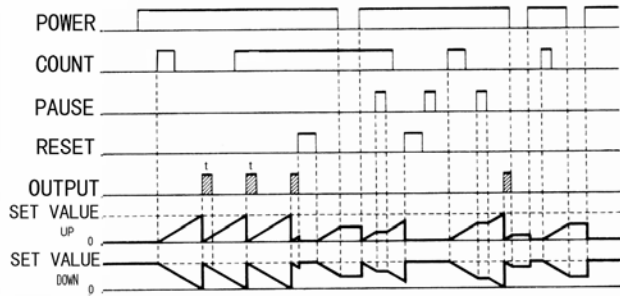
A2 MODE



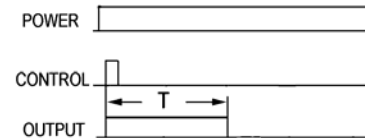
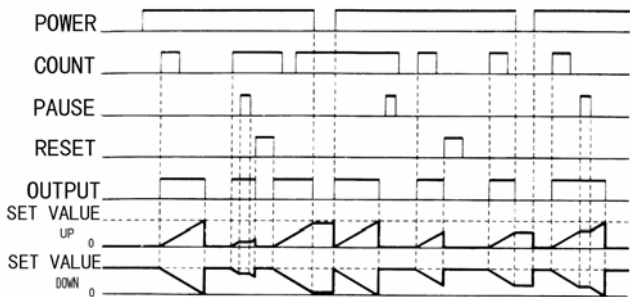
B MODE (HOLD):

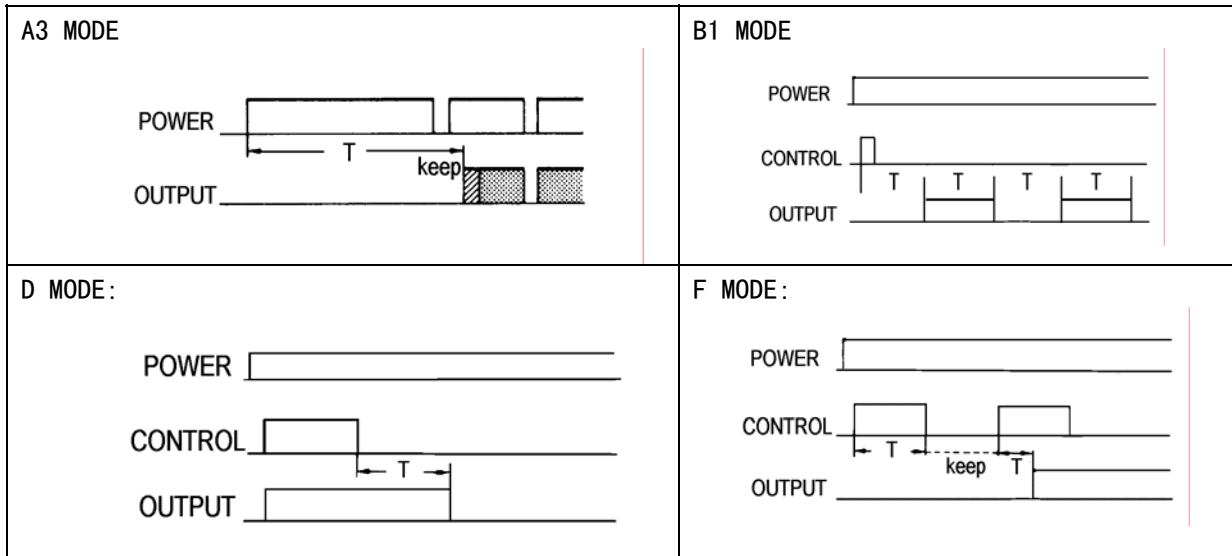


B MODE ONE SHOT OUTPUT:



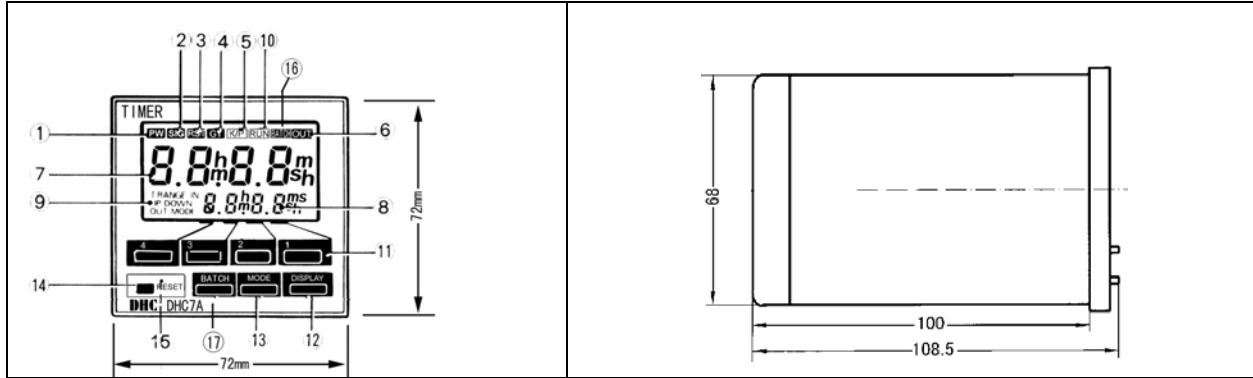
E MODE





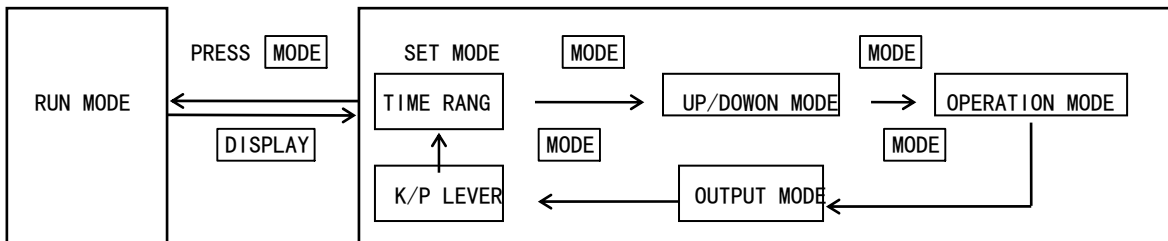
One short output
 Can be select on-short output or hold mode
 Hold mode

■ DIMENSIONS



- | | |
|--|--|
| <ul style="list-style-type: none"> 1. POWER (PW) 2. SIGNAL INPUT (SIG) 3. RESET INPUT (RST) 4. GATE INPUT (GT) 5. KEY PROTECTION (K/P) 6. OUTPUT (OUT) 7. PERENT VALUE 8. SET TIME | <ul style="list-style-type: none"> 9. MODE POINT 10. RUN POINTRUN 11. SET KEY 12. DISPLAY KEY 13. MODE KEY 14. RESET KEY 15. SYSTEM RESET KEY 16. BATCH OUTPUT (BATCH) |
|--|--|

■ OPERATIONAL OVERVIEW

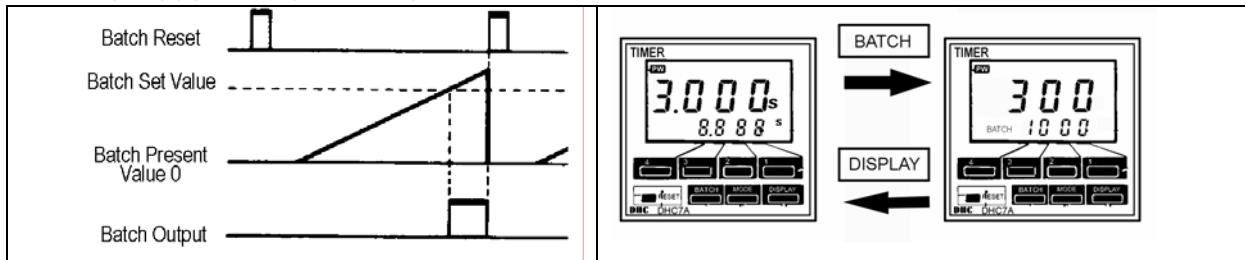


SET VALUES ARE CHANGED WITH THE INCREMENT KEYS 1~4.

■ SETTING ITEM TABLE

	<p>1. T. RANGE</p>	<p>PRESS 1 2 3 4 KEY SET DELAY TIME RANGE</p>
	<p>2. UP/DOWN</p>	<p>PRESS 1~4 ANY KEY CHANG UP OR Down</p>
	<p>3. OUT MODE</p>	<p>A→A1→A2→A3→b→b1→d→E→F PRESS 1~ 4CHANGE OPERATION MODE</p>
	<p>4. OUT</p>	<p>PRESS 4 KEY CHANGE HOLD OR ONE-SHORT OUTPUT PRESS 123 KEY SET OUTPUT DELAY TIMR,</p>
	<p>5. K/P</p>	<p>PRESS 1 2 3 4 CHANGE K/P LEVEL KP1—KP2—KP3—KP4 KP1 LOCK MODE KEY KP2 LOCK MODE , RESET KEY KP3 LOCK MODE , 1, 2, 3, 4 KEY KP4 LOCK MODE, 1, 2, 3, 4, RESET KEY</p>

■ BATCH COUNTER OPERATI ON:



■ CONNECTI ONS

